

The Ruthmere Record

THE RUTHMERE FOUNDATION, INC. • 302 E. BEARDSLEY AVENUE • ELKHART, INDIANA 46514

SPRING/SUMMER 2022

Board of Directors

Executive Committee

Edward A. Beardsley
James A. Bridenstine
Janet Evanega
George E. Freese
Todd Zeiger

Board

Joan Beardsley Norris
Robert Deputy
Dorinda Miles Smith
Connie Fulmer
Teri Stout
Greg Kil
Karen Cittadine
Ann Knoll
Michael J. Church
Jackson W. Beck
Tom Myers
Cody Combs

Museum Staff

Executive Director
William A. Firstenberger

Curator
Jennifer Johns

*Collections Manager/
Wedding Coordinator*
Joy Olsen

*Communications
Coordinator*
Carolyn Bonanno

Membership Coordinator
Mark Doddington

Outreach Curator
Andrea Barbour

Campus Gardener
Bree Askew

Program Coordinator
Lois Tomaszewski

Support Staff
Rose Goyette

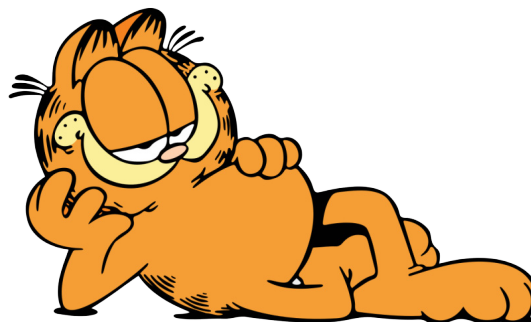
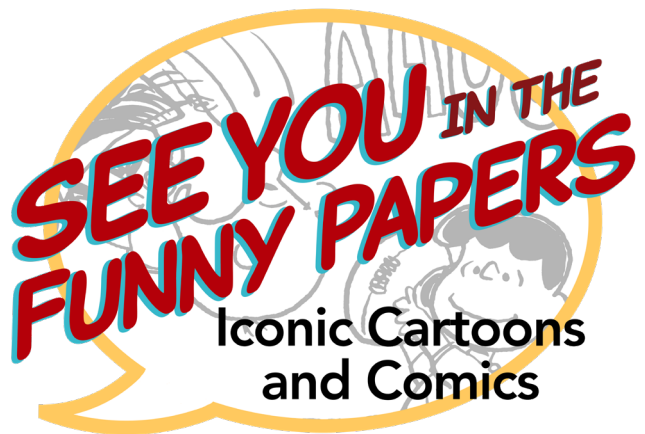
SEE YOU IN THE FUNNY PAPERS : ICONIC CARTOONS AND COMICS - SUMMER 2022 EXHIBIT

BY ANDREA BARBOUR, OUTREACH CURATOR

“See You in the Funny Papers,” a phrase that began to grace the American lexicon around the 1920s, served as a reminder that life can often be just as amusing and whimsical as the Sunday comics.

The so-called “funny papers” were still relatively new for people like Albert and Elizabeth Beardsley, (living at Ruthmere in the 1910s and 20s) – people who grew up with newspapers chock-full of the serious and grim. It wasn’t until 1896 when Richard F. Outcault’s “The Yellow Kid” first appeared in the *Hearst New York American* newspaper that newspapers became the place to get your fix of weekly funnies. Soon after, newspapers across the country were publishing delightful, colorful comics with endearing characters who had the ability to shape our perception of culture and society.

That’s what *See You in the Funny Papers*, our upcoming summer exhibit, is all about – the comics we grew up with, the characters that shaped our outlook on life, and the jokes that had the singular knack for bringing out a smile. Through multiple components loaned from various museums, we will be exploring comics known on both local and national levels and offering amusing doses of nostalgia for visitors of all ages. (cont'd page 4)



Ruthmere Record Editor
Andrea Barbour

Garfield and Brenda Starr

SPRING IS IN THE AIR AT RUTHMERE

By MARK DODDINGTON, MEMBERSHIP COORDINATOR

In keeping with our desire always to strive for bigger and better things, Ruthmere proudly announces our brand new Spring Concert Series. Four thrilling musical events will take place in our Game Room in the months of April, May and June.

Leading off the season on Thursday, April 21, in a twist on tradition, is former Beardsley Piano Prize judge Dr. Winston Choi from Roosevelt University in Chicago. After honoring us with his judicial skills, Dr. Choi will be bringing his own award-winning talents to our beautiful Steinway. Like all the performers in our concerts, Dr. Choi has performed and competed around the world to unanimous acclaim from all.

May 5, also a Thursday, brings another former Beardsley Prize judge into the spotlight, as Dr. Youmee Kim joins us from Ohio Wesleyan University. Another dynamic, world-acclaimed performer, Dr. Kim brings a fluid, spirited flavor to the Game Room.

On Thursday, May 19, Ruthmere is proud to welcome back a long-standing tradition. The Fischhoff National Chamber Music Soiree will grace our presence with a recital from its finest competitors. Keep an eye on our website for further details of who will be performing that night.

Wrapping up the Spring season on Thursday, June 2, longtime favorite Liana Paniyeva is making a return visit to Ruthmere. In her first appearance here since 2017, Ms. Paniyeva - a graduate of the Donetsk Music Academy in Ukraine - brings a unique Eurasian interpretation of the classic repertoire, a spectacular conclusion to what we hope will become a new tradition at Ruthmere.

Tickets for the Spring Concert Series are \$25 for Ruthmere members, \$40 for non-members. Season passes are also available to members only for \$100 and include all four events. If you aren't already a member, now is an ideal time to join.

Sponsorship opportunities are also available at \$500, \$1000, and \$1500 levels, and include free admission to Ruthmere Spring Concerts, exclusive sponsor-only meet-and-greets with the artists before the competition, and recognition in the Ruthmere Record.

Please keep in mind that all Spring Series season passes and sponsorships are for the Spring Concert Series only. Separate passes and sponsorships are available for the Fall Concert Series at the same rates. To purchase tickets or to become a sponsor, please contact Ruthmere at (574) 264-0330, or sign on to www.Ruthmere.org. You may also pay by check, but please be sure to note the purpose of your payment.



Winston Choi



Youmee Kim



Fischhoff Soiree



Liana Paniyeva

ONE STATE / ONE STORY

By LOIS TOMASZEWSKI, PROGRAM COORDINATOR



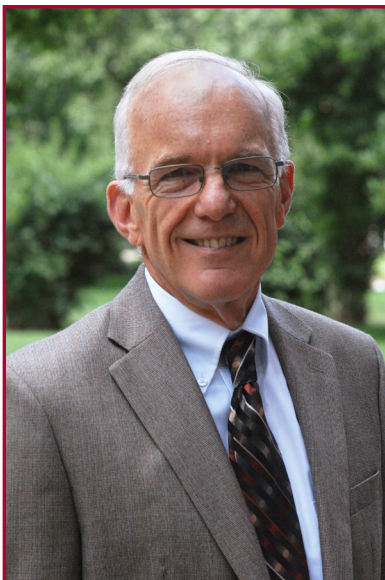
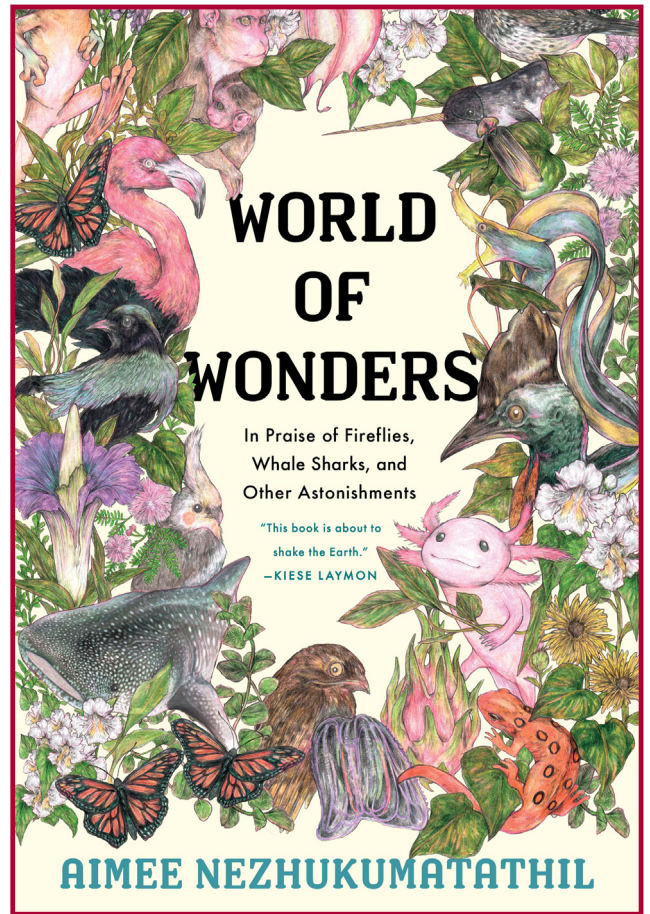
Author Salman Rushdie said: “A book is a version of the world. If you do not like it, ignore it; or offer your own version in return.” The opportunity to travel those worlds as a community will be highlighted this year as the Ruthmere Book Club hosts special events as part of the Indiana Humanities One State / One Story reading challenge for 2022.

Ruthmere Book Club received a \$750 grant and 30 copies of this year’s chosen book, Aimee Nezhukumatathil’s *World of Wonders: In Praise of Fireflies, Whale Sharks, and Other Astonishments*. Ruthmere is one of only 33 organizations state-wide selected to take part.

Nezhukumatathil’s collection of short essays explores the wonders of nature which defy easy depiction. She takes readers through her past experiences and shares guidance she’s received from our world’s fierce and funny creatures. These lessons are further supplemented by beautiful illustrations by Fumi Mini Nakamura throughout the book.

Every month the members of the Ruthmere Book club meet to discuss fiction and non-fiction books that relate to history. This book is a little different in its topic, but still relevant to the story of the interaction between humankind and nature, a saga that has gone on for time immemorial.

Three events are planned to correlate to the One State / One Story program. On June 16 at 6 p.m., the book club will host a community book discussion of *World of Wonders*. The additional copies of the book are available for loan to anyone who would like to read it and take part in the discussion.



The remaining two events for this project relate to *World of Wonders* and the roots of Elkhart’s history.

On Saturday, April 23, Goshen College Professor Luke Gascho, the former Executive Director of Merry Lea Environmental Learning Center of Goshen College and Professor of Sustainability and Environmental Education, will discuss "Living on Indigenous Landscapes: The Intersection of Potawatomi and Settler Histories in Northern Indiana." Gascho’s lecture is being provided by a second grant from Indiana Humanities. It will be held at 4 p.m. at the Havilah Beardsley House.

On August 20 at 2 p.m., we will host a screening of a Detroit Public Television Great Lakes Now series documentary called, “The Seven Generation River.” This film details the efforts of the Pokagon Band in restoring the natural environment using their traditional practices. The documentary is being provided at no charge by Detroit Public Television.

To reserve a copy of *World of Wonders*, send an email request to ltomaszewski@ruthmere.org.

One State / One Story: *World of Wonders* is an initiative designed by Indiana Humanities, in partnership with the Indiana State Library and Indiana Center for the Book, to encourage Hoosiers to read and engage deeply with a book as part of a statewide conversation tied to Indiana Humanities’ current theme.

SEE YOU IN THE FUNNY PAPERS: ICONIC CARTOONS AND COMICS (CONT'D)

By ANDREA BARBOUR, OUTREACH CURATOR

The center component of this exhibit is *Pigskin Peanuts*, a traveling exhibition on loan from the Charles M. Schulz Museum in Santa Rosa, California. Including a wide time range of Schulz's comics, this exhibit features 50 "Peanuts" strips about football (who can forget Lucy pulling the football away at the last second before Charlie Brown can make the kick?), historic "Peanuts" collectibles, and an in-depth narrative with information about Schulz and the "Peanuts," among other things.

From July 1 to July 28 only, we will feature a traveling exhibit from the Indiana Historical Society: *From Pencils to Pixels: Hoosier Cartoons and Comics*. This part of *Funny Papers* brings the focus in on Hoosier editorial cartoonists, from Jim Davis and his fat-cat Garfield to the "first black political cartoonist," Henry Jackson Lewis. Indiana artists have had important roles in the development of illustrated art for over a century and a half – here's your opportunity to see how close to home these comics really are.

Other exhibit elements promise to make *See You in the Funny Papers* an unforgettable walk down memory lane. Some of these parts include: "Garfield," "Tumbleweeds," and "Roger Bean" memorabilia from Minnetrista in Muncie, IN; "Brenda Starr" comics from the Porter County Museum in Valparaiso, IN; animation cels and original artwork from the Hall of Heroes Superhero Museum in Elkhart; and materials of local comic artists such as Max Gwin and Bill Holman from the Nappanee Public Library in Nappanee, IN.

See You in the Funny Papers: Iconic Cartoons and Comics will run from July 1 through September 30, 2022 at the Havilah Beardsley House. This exhibit is made possible through the generous sponsorship of Steve & Julie Bachman, 1st Source Bank, and Gibson Insurance. Members are invited to join us for an EOQ Cocktail Party/Exhibit Sneak Peek on June 30; registration will open for this event closer to the date. Be sure to check our website for exhibit updates. Until then, we'll see you in the... well, you get it.

THE YEAR OF THE MOUSLEYS

By ANDREA BARBOUR, OUTREACH CURATOR

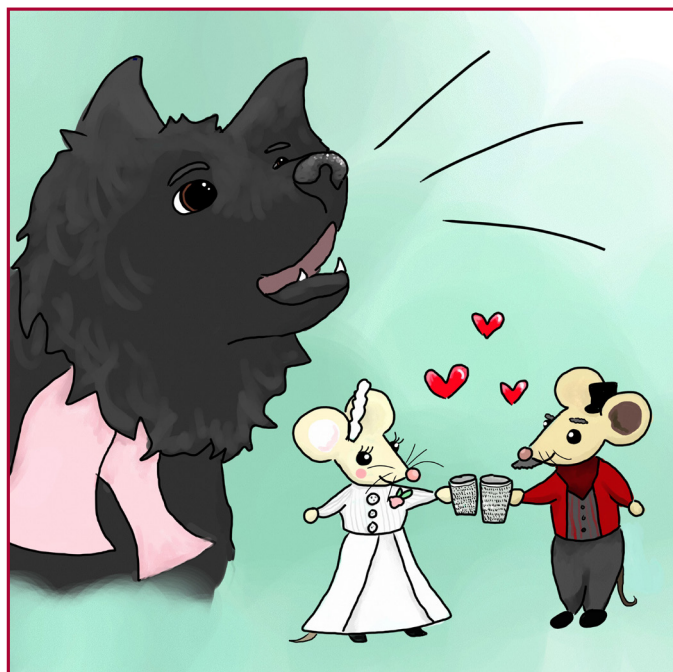
Everybody hide your cheese – the Mousleys have arrived!

2022 is the year of The Mousleys – a cast of original cute characters created for Ruthmere's new children's book, *The Mousleys at Ruthmere*. In the Fall/Winter 2021 edition of *The Ruthmere Record*, you read all about the concept behind the Mousleys and the hope that it will inspire children to visit Ruthmere and find interest in history. Collections Manager Joy Olsen and I created Lord Bertie and Lady Libbie Mousley, inspired by Albert and Elizabeth Beardsley, to give kids a more palatable introduction to the history of Elkhart and the museum.

The book is now available in our gift shop (in-store and online), and we have big plans for the year to make the Mousleys known. Our official launch party will take place during Free Family Sunday on April 3 – visitors will have a chance to purchase a book and have it signed by the author/illustrator (It's me!) and perhaps take part in some other Mousley-related activities. We are also partnering with the Elkhart Public Library Downtown Branch on May 16 to put on a fun family event, "Meet the Mousleys," where attendees will get to hear a reading of the book and learn about the connections to Elkhart history! And finally, we have tentative plans to center this year's Christmas theme around our new rodent friends, so stay tuned for more details about "A Merry Mousley Christmas."

We are currently in the planning stages for another Mousley adventure, which we hope to have completed by Christmas. There may be other Mousley merchandise coming to the gift shop soon, too.

Bring your kids by for a tour when we open on April 1 and grab your own copy of *The Mousleys at Ruthmere*!



HISTORIC CROSSINGS BY LAND AND SEA BUS TRIP

By WILLIAM A. FIRSTENBERGER, EXECUTIVE DIRECTOR



Sometimes the journey IS the destination. That is our aim for the epic voyage we have planned for July 15 with the Historic Crossings by Land and Sea Bus Trip. My spouse Lori and I have caught the Lake Michigan Shore bug, and we look forward to sharing a few of our past experiences and create new ones with friends on this tour that combines together “all things transportation.”

First and foremost, we will ride in style and comfort aboard the Royal Excursion Rock Star Motorcoach. Only 54 luxurious passenger seats are available on this jet black beauty, and when we leave Ruthmere mansion at 8:30am that morning every person who sees this bus on the road will

be thinking, “Wow, I wonder WHO is in THERE?” Answer--just us, some good-natured travelers from Ruthmere looking to explore history and make some of our own!

On the way to our morning stop we will cross no fewer than 15 historic routes of transport, including roads, rails and waterways. Your Furstenberg (which literally means “Royal Mountain” in German) guides will tag team the educational tidbits and extravagant treats as we wind our way north by northwest to our first destination—the historic Saugatuck Chain Ferry! In service since 1838 and the ONLY operating chain ferry in the country today, with a little luck we may get to cross on the ferry with Michigan Congressman Fred Upton, who recently saved this national treasure from an uncertain future. Brunch at the celebrated waterfront Coral Gables restaurant will fuel our engines for a quick exploration of Saugatuck’s famous artist studios and shops.

Next, we re-board our enchanting land yacht for a short harbor hop overland jaunt through fruit and wine country to the lovely city of South Haven. Our rock star status will be on full display when we roll up to the South Haven Marina, since we have the privilege of jumping to the front of the line as THE FIRST TOUR CHARTER GROUP to visit the NEW 17,000 sq. foot Michigan Maritime Museum! While there, we will also board the museum’s historic replica 1810 tall ship *Friends Good Will* and take her out for a 90-minute sail on the big lake for an unforgettable cruise. If that’s not enough (which it certainly ought to be), there might still be time to sneak across the harbor to take in a few charming shops before we collect our gourmet box dinners from The Depot Deli for our return trip home. Lucky travelers on this odyssey will arrive back at Ruthmere mansion at approximately 6:30pm in possession of a day’s-worth booty of treasured memories and bellies full of epicurean delights.

To reserve your spot go to Ruthmere.org and follow the announcement link to book online.



LOUIS COMFORT TIFFANY LEADERSHIP CIRCLE MEMBERS

\$10,000

Joan Beardsley Norris

\$5,000

Doug & Sharon Beardsley

Doug & Karen Grant

Raymond & Teri Stout



\$2,500

Jack & Karen Cittadine

Robert & Mary Pat Deputy

George & Kathy Freese

Connie Fulmer

Dorinda Miles Smith

\$1,000

Richard & Linda Armstrong

Thomas & Dottie Arnold

Steve & Julie Bachman

Stuart & Paula Barb

Edward & Mary Jo Beardsley

Richard & Kathleen Collins

Burt & Alene Culver

Peter & Lisa Deputy

Libby & Tom Eisele

Tom & Sara Elkin

John & Gwen Gildea

Brian & Lauri Smith

Terry Trimmer

Jeff & Phid Wells

RUTHMERE BUSINESS MEMBERS

President's Club

Gibson Insurance
1st Source Bank

Corporate Members

American Home Improvement
Bail Home Services & Construction
Greater Elkhart Chamber of Commerce
Indiana Trust Wealth Management

Business Honor Roll

Elkhart Public Library
InterCambio Express
Midwest Photographics
Napanee Public Library
Patti Tokar Canton CPA PC
St. Joseph Co. Public Library
T&E Lawn Service
Tutu School Elkhart
Laura Yoder Photography

RUTHMERE CHAMPIONS

Richard & Linda Armstrong
Tom & Dottie Arnold
Steve & Julie Bachman
Doug & Sharon Beardsley
Robert Beardsley
Jack & Karen Cittadine
Arthur J. Decio
Robert & Mary Pat Deputy
George & Kathy Freese
Connie Fulmer
Doug & Karen Grant

Judy Kistner
Dan & Jan Morrison
Joan Beardsley Norris
Rex & Alice Martin Foundation
Brian & Lauri Smith
Dorinda Miles Smith
Raymond & Teri Stout
George Thomas, Jr
Jeff & Phid Wells
Welter Foundation

CHAMPION BUSINESS

Kem Krest

CHAMPION TEAMS

"The Trailblazers"
Jim & Shelia Bridenstine
Bill & Lori Firstenberger
David T. & Susan Ball Lehman
Karen Nicholson
Terry Trimmer

"The Luminaries"
Stuart & Paula Barb
Tom Deputy
Kent & Becky Bontreger
Corson Family Foundation
Tom & Sue Neat

"The Pioneers"
Ed & Mary Jo Beardsley
Raymond & Mary Pat Mathis
James W. Rieckhoff
Dale & Shelly Seely
Marie Smith
Janet Evanega

RUTHMERE PATRON MEMBERSHIP

SILVER

Kent & Becky Bontreger
Cameron Combs
Cody Combs
Janet Evanega
Moe Jacobson
Tom Myers
James W. Rieckhoff
Rusty & Anita Ritchie
Kirk Root
Cheryl Waldman
Marsha Watson

BRONZE

Monica Abair
Steve & Jean Barton
Jackson Beck
Katelyn Bloss & Daniel Meade
Jan Cawley
Michelle & Michael Church
Bruce Combs
Kerri Craig
Linné & Rachel Dosé
Cynthia Dunlop
David & Lori Fairchild
Donald & Judy Findlay
Bill & Lori Firstenberger
Don & Dianne Frandsen
Jacquece Franklin
Robert & Karin Frey
Laura Funk
Dean & Judy Kelly
Jim Kelly
Neil & Patricia Klockow
David T. & Susan Ball Lehman
Robert & Gail Martin
William & Linda Meyer
Tom & Sue Neat
Earlene & Roger Nofziger
Tim, Ed & Mike Ritchie
Nicholas Roth
Stanley & Linda Rupnow
Dale & Shelly Seely
Tim & Meg Shelly
James Siegmann
Marc & Kris Stahl
Steven Watterson
Scott & Kim Welch
Sue Ann Williams
Arthur & Suzanne Wyatt

PATRON

Marilynn Anson
Leon & Toni Askew
Carolyn Bonanno
Jim & Sheila Bridenstine
John Casey
Nancy Denlinger
Mark Doddington
Bob Edel
Carol & Steve Eldridge
Kay Eller
Carol Emens
Kent & Lucy Emery
John & Sharon Feddersen
Jeff & Linda Fizer
Sally Flanders
Joanne Franklin
Eric & Jaime Garton
Dot Hansen
Mary Jane Hiles
Terry & Lu Hoogenboom
Laura & Randy Horst
Gordon & Phyllis Hostetler
Dean & Ruth Hupp
Celia & Charlie Kirk
Judy Kistner
Ann Knoll
Christine Kralovansky
Jacqueline Kuhn Wonso
Diana Lawson
Diane Lewandowski
Steve & Maralee Macumber
Jonnai Mauch & Brent Hussung

Barbara McArthur
Ruth Middleton
Margaret Miller
Patricia Morison
Barb Naranche
Joe & Cindy Neer
Beth Nellist
Michael Nicolini
Barbara Obenchain
Donald & Gayle Parker
Dena Phillips
Ann Rathburn-Lacopo
Marilyn Ronk
Rev. Willard & Alice Roth
Constance Saltzgaber
Nancy Slimak
Marie Smith
Patricia Smith
Jon & Carol Smoker
Doris Stevens
Neal & Jan Thomas
Brenda & Michael Tudor
Patricia Van Dyke
Marcia VanZile
Bill Walter
Don & Sidney Walter
Susan Weaver
Marty Weber
Steve & Carol Weld
Ann Wroblewski
Bob Yeggy, Sr.
Teryl Yoder

**THANK YOU FOR YOUR
CONTINUED SUPPORT OF
RUTHMERE CAMPUS!**

**IF AN UPDATE IS
REQUIRED, PLEASE CALL
574-264-0330 EXT. 107**



VOLUNTEER SPOTLIGHT: RUTH ROCKWELL

By JENNIFER JOHNS, CURATOR

Volunteers are the heart of Ruthmere. Last year the combined total volunteer hours were 2,568. Every year Ruthmere likes to acknowledge one of our volunteers who has gone above and beyond in service. This year we recognize Ruth Rockwell.

Ruth has been volunteering for Ruthmere since 2012. She is a docent for both Ruthmere and the Havilah Beardsley House and is part of the tea team for our tea events.

Ruth is a registered nurse and worked for Elkhart Family Physicians before retiring. She also volunteers at Loveway and the Humane Society of Elkhart County. She still uses her nursing skills by volunteering to take care of the kids at Camp Lutherhaven in Albion, Indiana.

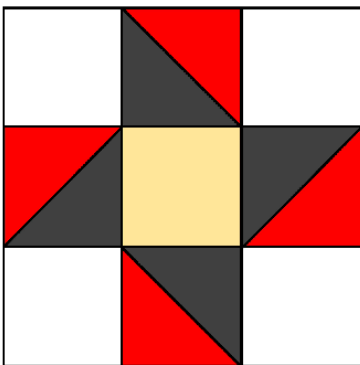
Ruth is committed to helping women become more self-sufficient as part of the Soup of Success program at Elkhart's Church Community Services. She started a Victorian Tea at holiday time as a fundraiser. Another fundraiser is making toffee with a former Sturgis High School Band member to assist current band and orchestra members with lessons, band camps and instrument purchases and repair.

Ruth and husband Don have lived in Elkhart for over 35 years. One of their goals is to travel and visit the more than 150 lighthouses on the coasts of Michigan's Great Lakes. They also are volunteer lighthouse keepers at the Cheboygan River Front Range Light.



2022 QUILT GARDEN - FRIENDSHIP STAR

By BREE ASKEW, CAMPUS GARDENER, & LOIS TOMASZEWSKI, PROGRAM COORDINATOR



This year's Quilt Garden design at Ruthmere is called the Friendship Star.

The story of Dr. Havilah Beardsley and Chief Pierre Moran is often told to guests visiting the Havilah Beardsley House. The two men, from two different cultures, forged a friendship during times in which that relationship was unexpected. In the 1830s, tensions were high between Native groups and frontier settlers - with good reason. A string of treaties filled with bad deals and broken promises placed injustice as the rule of the day.

Havilah Beardsley was an exception, treating Chief Pierre Moran with respect and even using his medical training to fashion a prosthesis for the chief, whose nose had been badly injured in a fight as a youth. In turn, it is reported that Moran used his influence to protect the settlers during tumultuous times. It is said that the two men remained friends for their entire lives – a fitting origin story for Elkhart's motto, "A city with a heart."

White begonias, red begonias, yellow snap dragons, and black potato vine will be used to create this year's design for Ruthmere's Quilt Garden. These colors are frequently used in the medicine wheel used by many Indigenous Nations as part of their ceremonies. The four colors also often symbolize the four directions, according to the National Park Service.

When choosing plants for our quilt garden, we have to keep in mind that most of the garden is in the shade. This limits our plant choices. Plant size and height also play a factor. Depending on the size of the plant, when it's planted, and the weather, it usually takes about a month for the plants to fill in and truly see the design.

A date for planting has yet to be set. It typically takes place in late May. Volunteers are always needed to help with the planting. Please contact Bree Askew at baskew@ruthmere.org if you are interested in becoming a garden volunteer!

2021 RUTHMERE FOREVER DONORS

By WILLIAM A. FIRSTENBERGER, EXECUTIVE DIRECTOR

The generosity we received in 2021 through our annual Ruthmere Forever campaign was truly amazing! We had a total of \$106,227.77 given from 94 donors. Most of these gifts (\$94,102.77) were made on the Challenge Match side, meaning that we can leverage these as community matches for grant applications or with other challenge match situations, or we can use these support funds now. The remaining gifts were made into our Ruthmere Forever Endowed Fund managed by the CFEC, who in turn gave us an additional 25%, thus building our long-term sustainability. We cannot say THANK YOU enough!

Richard & Linda Armstrong
Janet Arnold
Thomas & Dottie Arnold
Steve & Julie Bachman
Steve & Jean Barton
Doug & Sharon Beardsley
Ed & Mary Jo Beardsley
Bill Deputy Foundation
Becky & Kent Bontreger
Barbara Boss
Jim & Sheila Bridenstine
Bill & Susie Broderick
Jan Cawley
Geoff & Kathie Church
Jack & Karen Cittadine
Richard & Kathleen Collins
Peter & Lisa Deputy
Richard Deputy
Robert & Mary Pat Deputy
Tom Deputy
Shana Dines
Linné & Rachel Dosé
Libby & Tom Eisele
Tom & Sara Elkin

Carol Emens
Cindy & Lee Evers
Don & Dianne Frandsen
George & Kathy Freese
Robert & Karin Frey
Connie Fulmer
Doug & Karen Grant
Terry & Lu Hooenboom
Gordon & Phyllis Hostetler
Dean & Ruth Hupp
Betty Langle Kegerreis
Neil & Patricia Klockow
Ann Knoll
David T. & Susan Ball Lehman
Robert & Gail Martin
Raymond & Mary Pat Mathis
Jonnai Mauch & Brent Hussung
Rebecca Mayfield
Barbara McArthur
William & Linda Meyer
Ruth Middleton
Dan & Jan Morrison
Barb Naranche
Karen Nicholson

Joan Beardsley Norris
Ann & John Nofsinger
Jonathan & Leisa Norris
Susan & Jack Parkhurst
Jan & Nick Pellus
Dena Phillips
Lynn Plank
Ruth Rockwell
Matthew Rydson
Dale & Shelly Seely
Nancy Slimak
George & Marilyn Smith
Marie Smith
Debbie & Dan Smogor
Marc & Kris Stahl
Raymond & Teri Stout
Brenda & Michael Tudor
Dan & Lisa Tychonievich
Scott & Kim Welch
Jeff & Phid Wells
Ed & Willy Welter
Jacqueline Kuhn Wonso
Ann Wroblewski
Arthur & Suzanne Wyatt

THE DUET

By JOY OLSEN, WEDDING COORDINATOR, & ANDREA BARBOUR, OUTREACH CURATOR

A refined and elegant location for a perfect wedding is certainly Ruthmere. The mansion's courtyard garden is vintage and intimate, creating a memorable location that wedding guests will talk about for a very long time. This historic site is the ideal venue to start your life's journey together.

Just a few blocks south of Ruthmere is a location that carries a musical theme throughout – the newly renovated Hotel Elkhart. Originally built in 1923, this iconic Elkhart landmark is the perfect location to continue your day's historic theme. Book the Aria Ballroom for an elegant and stylish reception venue and choose from one of the Hotel's on-site restaurants for exquisite catering. All newlyweds who choose the Aria Ballroom as their reception venue receive a complimentary room at the Hotel, so you can end your dream wedding day with the finest Elkhart has to offer.



Ruthmere, circa 1910, and the massive Hotel Elkhart, circa 1923, create the perfect DUET of historic elegance.

Book soon - both locations are filling up quickly! Contact Joy Olsen at jolsen@ruthmere.org or (574) 264-0330 (ext. 103) for information about booking with Ruthmere. Ruthmere offers a number of wedding packages to accommodate your needs. Contact Denita Henry, Sales Director at the Hotel Elkhart, at sales@hotelelkhart.com for information about booking with the Hotel.

HOT COFFEE AND HOTTER MUSIC

By MARK DODDINGTON, MEMBERSHIP COORDINATOR

Ruthmere has another sizzling lineup of talent to get us through the dog days of summer. Coffee on the Piazza will launch for another season on June 4, and run every Saturday morning through the end of August. Along with some old favorites, Ruthmere proudly welcomes several new acts to the roster this year.

June starts off with a return performance by rocker Dave Van Dyke on the 4th, followed by pop-folk guitarist Mykayla Cynthia on the 11th, Grand Rapids pop-rock duo Lighting Matches on the 18th, and Irish duo Riely O'Connor and Molly Moon on the 25th.

Not to be outdone, July brings three newcomers to the stage: Abbie Thomas, pop vocalist/guitarist appears on July 2, followed by a return performance from folk-pop duo 30 Year Wait on the 9th. On the 16th, we welcome sister act Broken Wanderer, and on the 23rd, pianist and vocalist Isabelle Pouya, making her first appearance at Ruthmere. Returning singer/guitarist Elijah Durnell, better known as Graceland Avenue, finishes the month on July 30.

Long-time fan favorite Anna p.s opens August on the 6th. Blues-rock vocalist Rachel Eichhorn returns on August 13, followed by the Cool Change Band on the 20th, and finally, Johnny & I (John Smith and his assortment of gadgets) wraps up the summer on August 27.

Many artists offer CDs and other merchandise for sale, so be sure to bring your spending loot.

Coffee on the Piazza is a free, family-friendly event open to any and all. Gates open at 10 a.m. each Saturday morning, and the music runs from 10:30-noon. Free coffee from The Refinery goes perfectly with succulent Rise N' Roll donuts, themselves available for a \$2 donation. We want to thank Tom Myers for sponsoring this wonderful series. We are happy to welcome back Awakening Realm, who will be offering free yoga classes on the West Lawn.

Ruthmere mansion will be open for tours during these events at regular tour rates, so bring the whole family and start your weekend with a long-standing Elkhart tradition.



RUTHMERE INFRASTRUCTURE UPDATE

By WILLIAM A. FIRSTENBERGER, EXECUTIVE DIRECTOR



In the Spring/Summer issue of the 2021 Ruthmere Record we announced the bold initiative by the Ruthmere Board to invest \$500,000 in infrastructural improvements over the next two years. Recall that these improvements are made possible through the support of Ruthmere Champions and the Board's unanimous decision to sell the Rodin sculpture known as the "Fallen Caryatid" in 2019. Since that watershed event Ruthmere's future has continued to glow bright, and the obvious place to start was to take better care of our facilities.

Long back-burnered projects were re-prioritized with an eye for "preservation first." In 2021 we completed the installation of a new membrane roof on Ruthmere mansion since the previous roof was over 25 years old and out of warranty. Centimark Roofing, the company that installed our previous roof and with whom we have gained great trust over the past decades, came in with a competitive fair quote for an upgraded TPO membrane type roof. Our new WHITE roof will reflect the sunlight instead of absorbing it as the old black rubber roof did, thus providing greater heating/cooling efficiency.

While we were on the roof project, the time was ripe to do top to bottom masonry repairs and tuck pointing of every stone/brick/mortar surface, a process which carries over into 2022. During 2021 all surfaces that impact roof areas such as chimneys, parapets and walls over lower level roofs were addressed by our longstanding masonry contractor J&J Custom Masonry, a multi-generation, family-owned business that has been serving Ruthmere for nearly 50 years.

Staying up on the roof (since the view is so nice!), 2021 was the right time to address our aging rooftop HVAC unit and replace it with the ultra-efficient option of a "mini-split" HVAC system installed by Griffen Plumbing & Heating. This new system removed not only a large heavy mechanical unit from the roof, but also removed approximately 100 feet of sprawling inefficient ductwork and vents penetrating the roof structure, resulting in a new roof with far fewer potential weak points at risk for future leaks—smart!

Probably the most dramatic day connected to these projects was June 15, the day that we had two monstrous cranes on site plucking off old equipment and sending up new materials. Streets were closed and it was quite a sight to behold.

In 2022 the masonry work continues at Ruthmere, and the Havilah Beardsley House will be getting some much-needed love with its new roof as well. Lastly, we have a variety of fencing projects to complete across the Campus in 2022 that will keep things safe and secure for everyone.



NEEDING A LITTLE T.L.C.

By JOY OLSEN, COLLECTIONS MANAGER, & ANDREA BARBOUR, OUTREACH CURATOR



The Pratt-Forty, one of three historic cars on exhibit in Ruthmere's garage, came into the collection in 1984 after Robert Beardsley purchased it from a private owner. It proudly represents a local company that is no longer in business – the Elkhart Carriage and Harness Manufacturing Company.

This company began in 1873, and the original intention of its founders, William and George Pratt, was to produce buggies and carriages. Before long, the motorized vehicle took over modern transportation and the horse-and-buggy was a thing of the past. Elkhart Carriage, hoping to keep up with the times, eventually became the Elkhart Carriage and Motor Car Company, transitioning from successful buggy builder into respected manufacturer of quality-assembled automobiles. By 1908, the company was producing motor cars in Elkhart. One of their earliest models was the 1912 Pratt-Forty – a 40 horsepower vehicle that sold for \$2,000 (around \$57,000 in 2022).

In the 110 years since its manufacturing, Ruthmere's Pratt has been all over the country, but its journey began and ended in the same place – Elkhart, Indiana. We've taken great care of the Pratt in the 38 years we've had it, but sometimes there's no stopping the natural wear and tear that comes with time. Even though the Pratt is displayed in a climate controlled environment and is rarely moved from its place in the museum, it still developed paint blistering and required a small restoration.

An agreement was made within the collections team to call on one of the top auto restoration companies in the area: LaVine Restorations, Inc. Sizing up the work and what needed to be accomplished, the LaVine professionals set into removing the radiator from the chassis. The Pratt's paint needs to be color matched for the repair of the peeling areas. This is a tricky job, as the styling of the Pratt was painted with a high gloss paint and hand detailed pinstripes. If any of the brittle radiator hoses crack upon removal, these, too, will need to be replaced with comparable hoses.

As of the time of this writing, we do not yet have the Pratt back in one piece – but be sure to stop by the garage sometime in the future to appreciate the beauty of a vehicle that has been expertly preserved for over a hundred years with the help of a little T.L.C.



Eric LaVine, LaVine Restorations, Inc. owner, and Jason Stoller, LaVine manager & in-house counsel, work on removing the radiator from the Pratt.

2022 SO FAR...



Volunteer Beth Hall drew the connections between "Crochet, Queen Victoria, and the Irish Potato Famine" at her great Gallery Talk!



Joy and Andrea explored the contents of one of Walter Beardsley's steamer trunks in A.R.'s closet - it was still in great shape!



Volunteer Brenda Tudor gave a fantastic Gallery Talk on "Servants of the Gilded Age"!



We gained a new Team Member - Support Staff Rose Goyette!



We awarded a \$1,000 check to Loveway on behalf of Matzke Florist - the winner of our Hollywood Holiday competition!

POTTERY FAIR

By CAROLYN BONANNO, COMMUNICATIONS COORDINATOR

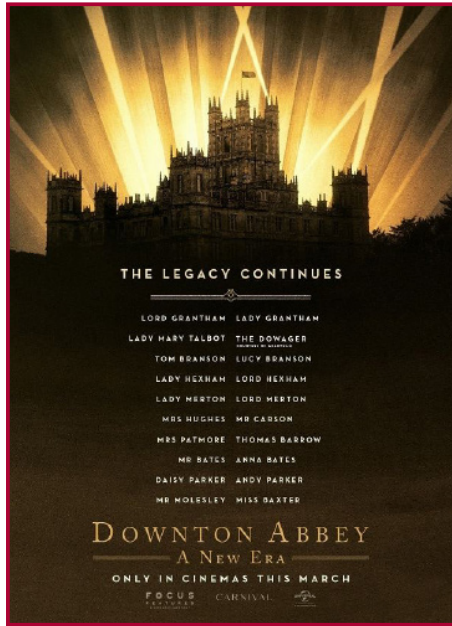
Ruthmere Museum is once again hosting the 2022 Ceramic & Pottery Fair on Saturday, July 23rd from 10am – 3pm on the Ruthmere Museum Grounds. This is a free event through the generous support of Jack and Karen Cittadine.

The 2021 fair was a great success with 13 potters bringing their best in handcrafted pottery, coming from as far as Chicago and Grand Rapids. These potters are invited for our July 23rd event. Sales were excellent for the potters and attendees appreciated the artistic quality of their work. It promises to be another fun, enjoyable event that you won't want to miss.



WHO'S UP FOR DOWNTON?

By MARK DODDINGTON, MEMBERSHIP COORDINATOR



The long-anticipated follow-up to the wildly successful *Downton Abbey: The Movie* is set for release this spring. After the disappointment of a delayed premiere, Universal Studios has announced May 20, 2022, as the new US release date for *Downton Abbey: A New Era*.

Like the pliable Crawley family, Ruthmere will be keeping up with tradition while still keeping abreast of progress. As we did to celebrate the release of the first film, we will be holding a grand event to kick off this one, as well. Ruthmere will be hosting a pre-film self-service finger buffet and champagne toast reception in the Game Room on Saturday, May 21, at 1 p.m.

We are booking an entire auditorium at the Elkhart AMC theater on Cassopolis Street to view the new film immediately following the buffet. Our matinee is scheduled for 3 p.m., allowing guests plenty of time to make the most of their Saturday evening, as well.

Don your finest 1920's fashions for this festive event. Or be modern, it's your choice. Join us for a trivia contest, delight in elegant finger foods, teas and other bevies, followed by a champagne toast before setting off for the theater.

Seating for the full works is limited to 50 people. Tickets are \$30. We also have an additional 40 seats for just the movie, available for \$7 apiece. All tickets are sold on a strict first-come-

first-served basis, and are limited to groups of five people to ensure that everyone has an equal chance to join in the fun. You may reserve seats on our website at www.ruthmere.org, or call us at (574) 264-0330. This special event is made possible through the generous sponsorship of Doug and Karen Grant.

As of this writing, facemasks are optional according to Indiana statutes. This is subject to change depending on the vagaries of the COVID-19 virus and its variants. Please keep in mind that the release date of the film is also subject to change at the discretion of Universal Studios. But, then again, even Carson must move with the times.

SOMEBODY'S WATCHING ME...

By JOY OLSEN, COLLECTIONS MANAGER/WEDDING COORDINATOR

I always enjoy hearing the Motown song “Somebody’s Watching Me” by Rockwell. It was “not a secret” that Michael Jackson sang the backup vocals. If I heard the song, it would stay in my mind the whole blasted day!



Well, while working at Ruthmere the other day, I had the feeling that “Somebody’s Watching ME!” Now, in all the years I’ve worked at the museum (17+), I have never, ever, ever had an experience that would create fear in me—until that day.

I felt...somebody’s watching me!

I was working in the front room of Ruthmere, known as the French Drawing Room, and a creepy feeling came over me. I looked up and came eye to eye with the mug of The Green Man! We locked eyes, and then I got it. He’s been watching me!

Who (or what) is the Green Man? Where did he come from? Well, many times, on very old churches and buildings all around the world going back as far as the second century, a strange figure could be found. It would be a face surrounded by, or even composed of, leaves. He’s called The Green Man, although his real name is unknown—if he ever had one. For all their differences in moods, these carvings give a common impression

of something—or someone—alive among the green buds of summer or the brown leaves of autumn. Green men can vary from the comic to the beautiful, although often the most beautiful ones are the most sinister. Some were carved on location by artists perched in cramped positions on huge, wooden scaffolds. Others were prepared in advance in an artist’s studio, often cold and damp. (cont'd page 13)

SOMEBODY'S WATCHING ME... (CONT'D)

By JOY OLSEN, COLLECTIONS MANAGER/WEDDING COORDINATOR

I wonder, where did our “trickster in the leaves” come from? The earliest example comes from second-century Iraq. They are particularly prevalent in Gothic Revival art and architecture of the nineteenth century, such as something the homeowners, Elizabeth and Albert Beardsley, saw many times during their trips to Europe. The faces at Ruthmere are in no way moody or mean looking, but handsome and a touch elegant, just like the house itself.

Could they be something that the architect, E. Hill Turnock, added in for fun and interest? Well, maybe, but I believe it was part of a design a Grand Rapids or Detroit interior design firm added while decorating the magnificent ceiling in that room. Bravo to whosoever idea it was!

Stop into Ruthmere and look up. Every room has all surfaces decorated, especially the French Drawing Room. You'll leave singing the tune, “Somebody's watching me....”

GRANT EFFORTS CONTINUE

By LOIS TOMASZEWSKI, PROGRAM COORDINATOR

Efforts by members of the Ruthmere staff have resulted in the awarding of several grants over the past months. Grant funds have been gained for the benefit of Ruthmere's current and future programs.

In summer, Indiana Humanities invited organizations to apply for two different grant opportunities using American Recovery Act funds. One of these grant programs was for operation support and the second one using the ARP money was earmarked for Capacity Building or Strategic Planning. The grant selection committee looked at a number of factors, including how COVID-19 impacted the delivery of our services. Another consideration was what plans were proposed to better prepare for the future and rebound from the COVID-19 impacts.

Ruthmere successfully met the requirements for both grants. For program support, Ruthmere received \$10,000. The capacity building grant submitted to Indiana Humanities requested \$10,000 to defray the costs of developing a strategic plan. This was awarded to us and the strategic planning process is underway with the help of the Dorothy A. Johnson Center for Philanthropy.

Ruthmere's Book Club submitted a grant application to be one of the state-wide locations offering Indiana Humanities annual One State/One Story program. That grant was \$750 plus 30 books and promotional materials. The requirements are to host a community book discussion and plan two other events. An additional \$400 speaker's fee was also awarded and will be used to host Professor Luke Gascho on April 23 for his lecture as part of this program.

Finally, a \$7,000 grant was received in February from Americana Corner, founded by Tom Hand in 2020 as an online resource focused on America's founding and first century of expansion. Ruthmere was among 67 organizations in 24 states to receive funding this year. The grant was requested to help fund the restoration of the front porch at Dr. Havilah Beardsley's house to reflect the original design from the 1874 expansion. This is the first source of funding for this project which is expected to prove costly.



Inside This Issue

1. *See You in the Funny Papers: Iconic Cartoons and Comics* - Summer 2022 Exhibit
2. Spring Is in the Air at Ruthmere
3. One State / One Story
4. *See You in the Funny Papers: Iconic Cartoons and Comics* (cont'd)/The Year of the Mousleys
5. Historic Crossings by Land and Sea Bus Trip
6. Louis Comfort Tiffany Members/Business Members/Champions
7. Ruthmere Patron Membership
8. Volunteer Spotlight/2022 Quilt Garden - Friendship Star
9. 2021 Ruthmere Forever Donors/The Duet
10. Hot Coffee and Hotter Music
11. Ruthmere Infrastructure Update
12. Needing a Little T.L.C.
13. 2022 So Far.../Pottery Fair
14. Who's Up for Downton?/Somebody's Watching Me...
15. Somebody's Watching Me... (cont'd)/Grant Efforts Continue
16. Inside This Issue/Volunteer Recruitment Detective Needs Your Help!

Ruthmere

THE RUTHMERE FOUNDATION, INC.
302 EAST BEARDSLEY AVENUE
ELKHART, INDIANA 46514
574.264.0330
WWW.RUTHMERE.ORG

NONPROFIT
ORGANIZATION
U.S. POSTAGE
PAID
PERMIT 71
GOSHEN, IN 46526

RUTHMERE IS SUPPORTED BY ITS MEMBERSHIP, PRIVATE DONATIONS, PLANNED GIFTS AND LEGACIES.

VOLUNTEER RECRUITMENT DETECTIVE NEEDS YOUR HELP!

By CAROLYN BONANNO, COMMUNICATIONS COORDINATOR

In 2022 I have been asked to apply all my best Nancy Drew detective skills in finding those treasured new Ruthmere volunteers. I have had a few past experiences in volunteer recruitment, and I imagine our Director and the Board expect me to bring my refined abilities yielding remarkable success. A tall order, for if you have ever tried your hand at it, you would have to agree with me that it is downright mind-boggling, patience-trying hard work. That said, I am totally committed to the task but finding myself asking something from you. Do you have ideas of places, organizations, clubs, churches, relatives, or friends where I might sleuth out much-needed volunteers? I am not asking for you to do my work for me - just take a moment to send your ideas to Carolyn Bonanno (a.k.a. Nancy Drew) at cbonanno@ruthmere.org. I will take it from there.

