

The Ruthmere Record

THE RUTHMERE FOUNDATION, INC. • 302 E. BEARDSLEY AVENUE • ELKHART, INDIANA 46514

SPRING/SUMMER 2014

Board of Directors

President

Robert B. Beardsley

Vice-President & Treasurer

George E. Freese

Secretary

Dorinda Miles Smith

Board

Arthur J. Decio

Robert Deputy

Susan C.S. Edwards

Charles A. Loving

Joan Beardsley Norris

Edward Beardsley

James A. Bridenstine

L. Craig Fulmer

Teri Stout

Museum Staff

Executive Director

William A. Firstenberger

Accounting Manager

Bob Frey

Development

Gail Martin

Curator

Jennifer Johns

Associate Curator

Kate Rogers

Communications Coordinator

Carolyn Bonanno

Collections Manager/ Wedding Coordinator

Joy Olsen

Campus Coordinator

Carla Riley

Visitor Services Coordinator

Sara Wells

BEARDSLEY ADVENTURES AT HIGHCLERE CASTLE (DOWNTON ABBEY)

By ROBERT B. BEARDSLEY - PRESIDENT

Long ago and far away, I met my father, Walter, in London in early August 1955, to begin the Grand Tour of the capitals of Europe. In hindsight it was a princely present for a mere graduate of Princeton University, Class of 1955, but that is another story. My connection with Highclere Castle, or Downton Abbey to many of us inebriates of that addicting drama, while slight but memorable, began one enchanted evening in Lowndes Square, Belgravia, as guests for cocktails and dinner of Catherine and Don Momand.

Don was then Managing Director of Miles Laboratories, Ltd. and Walter its Chairman. The Momands had a large grand piano in their living room on top of which was a massive bouquet of red roses. When Catherine, a music lover and a party girl for life, asked if I knew anything from "South Pacific," I said, "yes." I played, and she loved it. "I have a brilliant idea! Tomorrow we'll take Walter and Bob down to see Highclere, and in the afternoon they can meet my son Porchey after his cricket match. The Queen will be there."

Now for some genealogy and some dates. First, Catherine (1900-1979) by her first marriage to Henry Herbert, known as Lord Porchester or Porchey, was the 6th Countess of Carnarvon (1921-1937), and the daughter-in-law of George Herbert, the 5th Earl of Carnarvon and Almina Wombwell. George Herbert was the famous "Earl of Carnarvon" who bankrolled the 1922 King Tut discovery under Howard Carter. Catherine Wendell was born in Kittery, Maine, a member of a wealthy upper class Protestant family descended from the original Dutch settlers of Manhattan. In 1910 her father went broke so she, her mother and younger sister Philippa packed up and moved to London to live with British cousins well connected to London society. The Wendell sisters took it from there, and within 15 years both were married to Earls. Catherine's Lord Porchester was richer by far, but Philippa bagged a Scotsman, the Lord Galloway and a large hunting estate.

Catherine and Lord Porchester were very much in love in the beginning, but the Earl's philandering ways in contrast to her New England upbringing ended them in divorce by 1937. Tanis Montagu, heiress to a Guinness fortune, was the final straw and broken-hearted Catherine sued. Her "Wait a year!" had not worked, but ironically Porchey finally lost Tanis, too. She jilted him. The newspapers had a field day. "Dad Found King Tut But Son Can't Find Own Bride!" the headlines ran.

Lord Porchester (1924-2001), the 7th Earl and grandfather of the present Earl, was Catherine's son, 11 years older than I. Like his mother, he was



Ruthmere

An Experience in History, Art & Architecture

Renew or donate today!

Please complete this form and mail or fax to:

Ruthmere Museums Campus Membership

302 E. Beardsley Avenue, Elkhart, IN 46514

Phone: (574)264-0330 Fax: (574)266-0474

- Individual - \$50 Family - \$75 Patron - \$100
- Bronze Patron - \$250 Silver Patron - \$500
- Gold Patron - \$1,000 Rose Gold Patron - \$2,500
- Platinum Patron - \$5,000
- Diamond Patron - \$10,000
- Corporate Patron (For-Profit) - \$500
- Corporate Patron (Non-Profit) - \$250

Name(s) as you would like to be listed in publications _____

Address _____

City/State/ZIP _____

Home Phone _____

Business Phone _____

E-mail address _____

Total enclosed \$ _____
(payable to Ruthmere Museum)

Please charge \$ _____ to my credit card
 VISA MC Discover

Account number Expiration Date

Signature (required for credit card) _____

This is a gift membership for:

Name(s) _____

Address _____

City/State/ZIP _____

Home Phone _____

Memorial: In Memory of: _____
Memorials may be made anytime at Ruthmere.

Matching gift form enclosed. Membership contributions to Ruthmere Museums Campus may be matched by your employer. Ask if your company participates in the matching gift program.

Additional donation enclosed \$ _____
 Ruthmere Museums Campus
 Havilah Beardsley House Project
 Other _____

Ruthmere's mission is to inspire the imagination and promote excellence in fine arts, architecture, and historic preservation to advocate life-long learning and the entrepreneurial spirit.

RUTHMERE MEMBERSHIP

Your memberships and donations help ensure that there is a place in Elkhart where history, art and culture remain relevant in today's modern world. Ruthmere and the Havilah Beardsley House, important Elkhart landmarks, remind us of community roots and serve as a connection between our past and our future. **Thank you for your support!**

All membership levels include an unlimited number of visits to Ruthmere and Havilah Beardsley House for a year, the *Ruthmere Record*, advanced program information and member discounts on services and events.

Levels & Benefits

Individual - \$50 - Admit 2 free per visit

Family - \$75 - Admit 4 free per visit

Patron - \$100 - Admit 6 free per visit and

recognition in the Ruthmere Record

Bronze Patron - \$250 - Patron level benefits,

and free tickets to Discover Historic Elkhart Series

Silver Patron - \$500 - Patron level benefits,

and free tickets to the Fall Concert Series

Corporate Patron (For-Profit) - \$500

Corporate Patron (Non-Profit) - \$250

The Louis Comfort Tiffany Leadership

Circle is a special membership level that provides the benefits of the Patron membership, tickets to both the Discover Historic Elkhart Series, the Fall Concert Series and invitations to other special events. Recognition is offered at four membership levels: \$1,000 Gold Patron, \$2,500 Rose Gold Patron, \$5,000 Platinum Patron and \$10,000 Diamond Patron.

i-SPY TOUR - A WHOLE NEW WAY TO EXPERIENCE HISTORY!

By KATE ROGERS, ASSOCIATE CURATOR

Have you ever wanted to know more about the city of Elkhart, its monuments, museums or sites? Did you wish there was an easy and fun way to access such information? Well, there is! i-Spy Elkhart is a fun and free self-guided cell phone tour. Simply dial 574-584-7007, download the app for iPhone or Android, or access the mobile web version and away you go! There are several i-Spy Elkhart Tours currently available including: Havilah Beardsley House, Beardsley Historic District, E. Hill Turnock Architectural Tour, Elkhart Band Instrument Industrial Tour, Ruthmere Gardens & Grounds Tour, and the National New York Central Railroad Museum. As the weather warms up, consider getting outdoors and experiencing Elkhart's



history in a whole new way! Visit Ruthmere's website (www.ruthmere.org) and our Public Programs page for links and to learn more.

Are you interested in creating a tour or tour stops for your museum, historic site, and/or garden in Elkhart County? Or are you a local business owner interested in an advertising spot or sponsoring one of our tours or tour stops?

Contact Associate Curator Kate Rogers at 574-264-0330, ext 116 for more information.



BEARDSLEY ADVENTURES AT HIGHCLERE CASTLE (*Downton Abbey*)

continued from page 1

tall, good looking and delightful, veddy polite, quiet and always smiling. The same year I met Porchey in 1955, he married an American girl just as his father had done a generation prior, a Miss Jean Wallop from Big Horn, Wyoming.

Continuing my little story, the following morning the Momands collected us in their Rolls Royce at The Grosvenor House for the hour's drive southwest to Highclere in Berkshire. My first view of this enormous estate was noon that day as we entered the mile-long gravel drive to the front door. It was quite something. Today's word for it would be awesome. A masterpiece of Jacobean Revival design, its architect was Sir Charles Barry who was also responsible for the Houses of Parliament about the same time. Originally it was a fairly modest early Georgian country house, but with his talent and imagination it became the fairytale castle it is today. Highclere, set in 5,000 acres in some of England's most beautiful countryside, is a massive structure superbly set in a Capability



The Salon is socially the heart of the house.

Brown landscape, England's 18th century genius of landscape design. That August day it was at its loveliest. Bad luck for us, a house party was in progress that week so we did not actually go in, although the staff remembered Catherine lovingly from her last visit in 1945 when her daughter Penelope was married there. Good memories of nice people linger a long while. Despite the divorce she and the elder Porchey remained on good terms until she died in 1979. Along with her beloved brother Reggie and mother Marian she was buried in the Cemetery Chapel in the park. Her 1929 portrait, all pink and luminous, shows her in her full tranquil beauty. Once again it hangs in her sitting room, one of the favorite paintings of Lady Fiona, the current Countess.

As we drove around the estate, Catherine told us stories of her happier days at Highclere—the dinner parties, the shooting weekends, the receptions, the balls, and the endless stream of guests from the great of the land and from all over the world, really. She created her own rose garden, still there, where staff asked to go to rest or sew and still do, according to Lady Fiona's new biography of Catherine. The 1743 Temple of Diana and six other follies dramatically accent this huge estate here and there in the Great Park that used to be bigger, but like the last piece of pie in the refrigerator it got smaller and smaller. We did see young Porchey play his cricket match that day, and he was smashing, but to everyone's disappointment the Queen did not come after all. She had a cold that day and stayed at Windsor, and she is known almost never to cancel an

appearance. Porchey and the Queen were friends from childhood and shared a great interest in horses and racing. Lord Carnavon was Racing Horse Manager for her from 1969 until his death 2001. An Alka-Seltzer story about the young Queen and Prince Phillip during their early married years even made its way into the tour. Apparently one time after an evening in London with Porchey and his wife Jean, the Queen donned an apron at Porchey's flat and made scrambled eggs for everybody. She loved Alka-Seltzer because of "the fizzies!"

On our way north we stopped overnight in southwest Scotland to visit the Galloways, Catherine's sister Philippa and her husband Randolph Stewart, the 12th Earl of Galloway. We were warmly welcomed and stayed at Cumlodan House that used to be a shooting lodge just outside the market town of Newton Stewart. Loaded with stuffed deer heads, antique armor, beautiful oriental carpets and portraits, and while dark, it radiated generations of collecting the best and most beautiful of everything. Dinner at eight was quail in aspic, salmon, brussel sprouts, little new potatoes served by their butler and a footman. The table was dressed in a white cloth and loaded with gorgeous silver, the floral centerpiece something Philippa had "thrown together" that afternoon. Like everything else in the house, the owners were welcoming, gracious, and you wanted to move in and be their new American friends. Both girls, while American-born, had lost every trace of their American accent by the time we met them, but everything about both of them was charming and beautiful. It really was. I forget the dessert, but we had several wines and a walk after dinner.

"Would you like to see the main house?" I thought we were in it, but a short stroll through tree-shaded glens, the path littered with dead rabbits from the tularemia epidemic then sweeping Scotland, revealed high on a hillside a massive 18th century Georgian structure that to me looked abandoned, or at least shuttered and lifeless. The family lost their ancestral seat, Galloway House, for whatever reason in 1908; I never learned why, but that is when the family moved to the Hunting Lodge. My little room over the

continued on page 4

BEARDSLEY ADVENTURES AT HIGHCLERE CASTLE (*Downton Abbey*)

continued from page 3

front door had casement windows that looked out at the driveway, lawn, and gardens, all on a smaller scale than Highclere, but to me much more charming. English hunting prints lined the “toile de Jouy” wallpaper and everything about my cozy little room was comfortable. I heard woodcocks and doves calling to each other in the late evening light at dusk around 11 o’clock. It was an intimate and perfect visit.

A year later Catherine and her husband came to Elkhart on business and were guests of my Uncle Ed and Aunt Olive Beardsley on Greenleaf Boulevard. Uncle Ed was then President of Miles Laboratories, Inc. As before and always, Catherine charmed everybody. I can never forget her “receiving” in their beautiful gray French living room, tall, gracious, smiling, laughing, all the while playing with a long thin silk scarf. She was then 56 years old. A great lover of music, again she asked me to play for her, this time on the 1910 walnut Steinway concert grand that my relatives inherited when Ruthmere was sold out of the family in 1945. When Ed and Olive retired to Arizona, just a few years before our restoration efforts at Ruthmere began, the piano was sold, a near miss. It originally stood in the main hall near the Choralcelo organ, and you can see the end of it draped with a paisley shawl in the 1910 house brochure Elizabeth and A.R. Beardsley gave out to friends shortly after they moved into Ruthmere.

So, in a sense, Highclere has come to Elkhart after all.

Footnote: “Lady Catherine, the Earl, and the Real Downton Abbey,” 21013, ISBN 978-0-385-344496-8



HIGHLIGHTS TOUR: SELECTED WORKS FROM RUTHMERE’S FINE ART COLLECTION

By KATE ROGERS, ASSOCIATE CURATOR

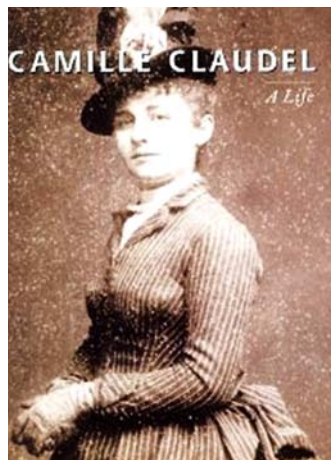
Ruthmere is a gem of a museum, a real treasure for Elkhart. Part of why it’s so special is its art collection. Ruthmere’s motto states that the museum is “an experience in history, art and architecture.” And now that is to be more true than ever! We have a new tour currently in the works that covers some of the highlights of Ruthmere’s fine art collection. We may have a modest collection in terms of quantity, but the quality is immensely impressive.

Our collection contains works by many masters, both European and American, from the nineteenth and early twentieth century. So we wanted to create a tour to do justice to our pieces. The new tour will introduce and explore objects of every medium, from painting to sculpture to furniture. On the tour, visitors, guided by docents, will be given an in-depth look at each of the items featured, discussing the artist, style, history and current context of each piece. With this tour we hope to facilitate visitor engagement with our objects, to encourage community passion and interest in art, and to educate guests about our collection and its context.

The Beardsley family are great lovers of art, and that story needs to be told. Join us beginning in April to experience and discuss works by great artists like Rodin, Claudel, Healy, Gibson, Tiffany and more!

The highlights tour at this time will be by appointment only. Interested? Please contact Associate Curator Kate Rogers at 574.264.0330, ext. 116 to make reservations.

*French Artist
Camille Claudel
(1864-1943)*



Featured below is one of the works to be showcased on our Highlights Tour. It is a sculpture by famous French artist Camille Claudel entitled “L’Implorante.” We see a woman, suspended, straining forward, a look of longing on her face. But for what does she yearn? Find out this spring!



“L’Implorante”

EOQ (END OF QUARTER) COCKTAILS

By WILLIAM A. FIRSTENBERGER, EXECUTIVE DIRECTOR

Ruthmere announces a new social series - EOQ Cocktails. The quarter's business is done. Come enjoy light hors d'oeuvres and select cocktails in a beautiful setting the last Friday in March, June, September and December. These events are open to all Ruthmere members and their guests. Bring friends, make new ones and start your weekend off right. Every EOQ (end of quarter) deserves its own theme and special drink to mark its success. EOQ Cocktails sponsored by Pumpernickel's Catering.

Member admission - \$15

Guest admission - \$20

Ruthmere Corporate Members and Bronze Patron Members and higher - Complimentary for Two.

5-7 p.m. at Creek House Center unless otherwise noted.

R.S.V.P. by Noon on event dates.

574-264-0330 ext.104

Creek House Center . 920 Grove Street . Elkhart, Indiana



March 28 - American Bourbon

June 27 - Juniper Party (Gin drinks)

September 26 - Single Malt Scotch at

Havilah Beardsley House

December 31 - Bubbly Madness and drawing for the Highclere Castle Trip Winner!

Start your New Year in Grand Style.

"THE HEIST" SECOND ANNUAL ELKHART BLACK TIE

By WILLIAM A. FIRSTENBERGER, EXECUTIVE DIRECTOR

In September of 2013, over one hundred and sixty guests "roared" at the First Annual Elkhart Black Tie event with a 1920s dance party that shook the foundations of the Crystal Ballroom. The goal was to start a new shining tradition—to host THE SOCIAL EVENT IN THE COMMUNITY and give Elkhart one unforgettable night every year. Mission accomplished.

This year on August 16th, guests will be "suspiciously" treated to the Second Annual Elkhart Black Tie entitled "The Heist." What was taken? Who done it? Did they get away? These are all riddles to be solved in an interactive evening of entertainment and intrigue. Table sponsors will start the evening with a private reception at Ruthmere before the fine dining, detective work, and dancing commence at the Crystal Ballroom. Proceeds from the event are shared by Ruthmere, the Lerner Theatre and the Young Professionals Network of Elkhart County.

Call the Lerner box office at 574-293-4469 to get your early bird tickets by July 1st for only \$75; after that, the price is \$100 per seat. All reservations must be made by August 1st. For table sponsorships, contact Ruthmere Executive Director, Bill Firstenberger at 574-264-0330 ext. 105.



Ruthmere
An Experience in History, Art & Architecture

 LERNER


network develop serve

ECCF CHALLENGE GRANT BRINGS HAVILAH BEARDSLEY HOUSE COMPLETION WITHIN SIGHT

BY GAIL MARTIN, DEVELOPMENT



Autumn 2010



Autumn 2013

The road of restoring the Havilah Beardsley House has been a long and winding one. Over the past six years, during a challenging economic climate, work has progressed as available resources allowed. Much progress has been made: a welcoming garden plaza and new main entrance, a state-of-the-art HVAC system, three interior rooms restored, and of course, the return of the historic 1874 paint colors on the home's exterior. Now, the Elkhart County Community Foundation has affirmed all the hard work that was done by awarding a capstone challenge grant of \$93,000 to help complete the remaining project budget of \$186,000.

The key word in the ECCF grant award is "challenge," meaning that the ECCF will match up to a maximum of \$93,000 of money raised by the Ruthmere Foundation. The challenge must be met for this extraordinary opportunity to be realized. The Ruthmere Foundation is asking for the public's help to meet this challenge. No gift is too small to make a difference. We hope to match this challenge as soon as possible and have set a preliminary goal of raising the \$93,000 challenge match by June 1, 2014. To make a contribution, please contact Gail Martin at 574-596-1804.

NEW HAVILAH BEARDSLEY HOUSE ENDOWED FUND

BY WILLIAM A. FIRSTENBERGER, EXECUTIVE DIRECTOR

Through a generous donation by Richard and Linda Armstrong and Robert and Mary Pat Deputy, a new endowed fund was recently established at the Elkhart County Community Foundation (ECCF) to serve as a repository for gifts that will support the long term sustainability of this site's operational costs. The ECCF will match annual contributions into this fund at a rate of 25% up to a maximum of \$25,000 per year. In other words, if the Ruthmere Foundation raises \$100,000 in 2014, then the ECCF will contribute to this fund an additional \$25,000. Ruthmere has set a goal of raising this maximum of \$100,000 each of the next five years which would add a principal into this fund of \$625,000. When this goal is reached, the Havilah Beardsley House will be a self-sustaining operation.



Dallas Schrock of Schrock Plaster Co. repairs plaster moulding.

THE Havilah Beardsley HOUSE

FOUNDERS' CIRCLE

Robert B. Beardsley
Arthur J. Decio & Patricia George Decio
Robert & Mary Pat Deputy
Alice A. & Rex Martin
Joan Beardsley Norris

ENTREPRENEURS - \$50,000 AND HIGHER

Arthur J. Decio & Patricia George Decio
Craig & Connie Fulmer
Elkhart County Community Foundation

INNOVATORS - \$30,000 TO \$49,999

Robert & Peggy Weed

GUARDIANS - \$15,000 TO \$29,999

Heritage Financial Group, Inc.
Anonymous
George & Kathy Freese
Welter Foundation

PATHFINDERS - \$5,000 TO \$14,999

James & Patricia Brotherson
Firefly Trust
Rim Institute
Dorinda Miles Smith
Jack & Karen Cittadine
John & Judy Kistner
Bill & Lori Firstenberger

CONTRIBUTORS - \$500 TO \$4,999

Stuart & Paula Barb
Laurel Spencer Forsythe
Darlene Adkins
The Questers, Frances C. Couquillard #78
Robert & Gail Martin



Steve & Ruth Ann Berger at Havilah Beardsley House IUSB Archaeology Dig

Welter Foundation



Docent Marie Smith with school field trip at Havilah Beardsley House

HAVILAH BEARDSLEY HOUSE ENDOWED FUND CONTRIBUTORS

Richard & Linda Armstrong
Robert & Mary Pat Deputy

NEW TRAVELING EXHIBIT TO HIGHLIGHT THE HAVILAH BEARDSLEY HOUSE PROJECT

By WILLIAM A. FIRSTENBERGER, EXECUTIVE DIRECTOR

Much has been learned over the past several years about the Beardsley House and the folklore surrounding it. The facts revealed through a variety of research methods and community partnerships dispel myths and tell the story of Elkhart's roots as never told before. Ruthmere will share these findings of the Havilah Beardsley House Restoration Project with the community through an exciting and interactive new traveling exhibit, *Revealing the Truth: The Secrets of the Havilah Beardsley House*.

Revealing the Truth will open to the public at the Havilah Beardsley House on May 4th, and will continue through October 5th. Beginning in October, *Revealing the Truth* will travel for the next three years to area libraries, schools, churches and other public facilities.

If your organization would like to book the exhibit, please contact Curator Jennifer Johns at 574-264-0330 ext. 104.



Ground penetrating radar investigation at Havilah Beardsley House. Left to right: Ruthmere Curator, Jennifer Johns; Notre Dame Professor of Anthropology, Dr. Mark Schurr; IU South Bend Professor of Anthropology, Dr. James VanderVeen.



IUSB anthropology students and volunteers at archaeology dig at Havilah Beardsley House.



Verlin Miller and Bruce Gowdy install restored baseboards at Havilah Beardsley House

RUTHMERE CORPORATE SPONSORS

Join us in thanking our Program Sponsors & Business Partners

Key Bank - Coffee on the Piazza

1st Source Bank - Patriotic Series

Elkhart Noon Rotary - Youth Education Programs

Pumpnickel's Catering - EOQ Cocktails

LOCAL BUSINESS PARTNERS

IUSB Ernestine M. Raclin School of the Arts

IUSB Anthropology Department

Indiana Landmarks

University of Notre Dame Anthropology Department

Downtown Elkhart, Inc.

Elkhart County Community Foundation

Elkhart County Convention and Visitors Bureau

Greater Elkhart Chamber of Commerce

Elkhart Young Professionals Network

Elkhart County Museum Association

Christiana Creek Coalition

Elkhart City Parks Department

City of Elkhart

Elkhart Public Library

The Lerner Theatre

Wellfield Botanic Gardens

Habitat for Humanity of Elkhart County, Inc.

St. Paul's United Methodist Church

Big Brothers Big Sisters of Elkhart County

First Presbyterian Church of Elkhart

WVPE

WNIT

The Elkhart Truth

Matterhorn Conference Center

Kil Architecture & Planning

American Home Improvements

L.P. Custom Painting

Johnson Masonry, Inc.

Domain Logic Technology Solutions

Chupp's Piano Service

Radecki Galleries, Inc.

H&M Tree Service

Himco Waste-Away

The Daily Grind



*Back of Ruthmere's School Field Trip Bookmark used as a writing prompt for students following classroom field trip.
Youth Education Sponsored by Elkhart Noon Rotary Grant (front on page 13)*

LOUIS COMFORT TIFFANY LEADERSHIP CIRCLE MEMBERS

\$10,000 DIAMOND

Joan Beardsley Norris

\$5,000 PLATINUM

Arthur J. Decio

& Patricia George Decio

Robert & Mary Pat Deputy

Dorinda Miles Smith

Welter Foundation



\$1,000 GOLD PATRON

Darlene Adkins

Thomas & Dorothy Corson

Burt & Alene Culver

Richard Deputy

Thomas & Margaret Deputy

Lois Dusthimer

John & Gwen Gildea

Doug & Barbara Grant

Roger & Diane Kollat

Thomas & Dana Pletcher

Peggy Weed

Scott & Kim Welch

Jeff & Phid Wells

\$2,500 ROSE GOLD PATRON

Richard & Linda Armstrong

Robert B. Beardsley

Jim & Patty Brotherson

Jack & Karen Cittadine

Peter & Lisa Deputy

George & Kathy Freese

Craig & Connie Fulmer

Raymond & Teri Stout

NEW THIS SPRING TO LCT MEMBERS

New this spring is a special art tour for the Louis Comfort Tiffany Leadership Circle members. LCT members have the opportunity to enjoy an all expense paid Michigan Art Tour to the Edsel and Eleanor Ford House with savvy guide, James Bridenstine, Director of the Kalamazoo Institute of Art. For more information, please call Gail Martin at 574-596-1804. Deadline is April 16, 2014.



Edsel & Eleanor



Ford House

\$500 SILVER PATRON

Thomas & Dorothy Arnold
Dean & Peggy Birzele
William & Katie Bissell
Tom & Liz Borger
Barbara Borneman
Faiz & Holly Khoja
Philip & Jeannette Lux
Bill & Elaine Marohn
James & Sidney Rieckhoff
David & Nancy Smith
L.P. Custom Painting

\$250 BRONZE PATRON

Stuart & Paula Barb
Jim & Lois Bare
Edward & Mary Jo Beardsley
Peter Combs
Kent & Lucy Emery
Donald & Judy Findlay
Bill & Lori Firstenberger
Laura Funk
Charles & Annick Loving
Clair Luther
Robert & Gail Martin
Lynne Miles
Thad & Rachelle Naquin
Marilou Ritchie Family
Kirk & Sue Root
William & Nancy Slimak

**THANK YOU FOR YOUR CONTINUED SUPPORT
OF THE RUTHMERE FOUNDATION. PLEASE
CONTACT US IF AN UPDATE IS REQUIRED.**

IS HE REAL? LIVE STATUE COMING TO ELKHART JAZZ FESTIVAL

Ruthmere is bringing the international award-winning performance artist Robert Shangle of LiveStatue to the 2014 Elkhart Jazz Festival. Robert will mesmerize the crowds with his engaging and sophisticated living statue performances June 19-21. Partial underwriting for LiveStatue by Downton Elkhart, Inc.

RUTHMERE MEMBERSHIP

\$100 PATRON

Marilynn Anson
Harold & Jane Atkins
Stephen & Jean Barton
Carolyn Bonanno
Brian & Jeannelle Brady
James & Sheila Bridenstine
B. E. Brill Electric
Richard Brotherson
Gail & Rex Brown
Jan Cawley
Geoffrey & Kathie Church
Tana & Chris Clementz
Mr. & Mrs. William Cloar
Doloris Cogan
Bruce & Deidre Combs
Lawerence & Mary These Daher
Linne & Rachel Dose
Robert D. Edel
Carol Emens
John & Sharon Fedderson
Robert & Karin Frey
Charles & Phyllis Gordon
Laura & Randy Horst
Charissa Barnes Johnson
Dean & Judy Kelly
Charlie & Celia Kirk
Jeffrey Kissell
Doug & Becky Kline
Mr. & Mrs. Neil Klockow
Annette Kozak
Fred & Carolyn Lamble
David T. & Susan Lehman
Robert & Annabelle Lerch
Janice Lohman
Arlene Mark

CORPORATE PATRON MEMBER

INOVA Federal Credit Union
Key Bank
1st Source Bank

Alex & Barbara McArthur
Douglas & Karen Mick
Ned & Flo Monger
Patricia Morison
Clifford & Jean Murray
Tom Myers
Mary Naquin
Georgene Nelson
Mike & Tina Nicolini
Barbara Obenchain
Randy Perry
Clyde & Carla Riley
Edward Ritchie
Kate Rogers
Bob & Marilyn Ronk
Nicholas Roth
Rev. Willard & Alice Roth
Bruce & Becky Shreiner
Jim & LaRayne Siegmann
Marie Smith
Patricia Smith
Jon & Carol Smoker
Mary Lou Stackhouse
Doris Stevens
Jim & Judy Stringfellow
Ken & Charlotte Stuff
Terry Trimmer
Joan Troyer
Linda Unger
Sklyer Walker
Marilyn & John Werner
Betty Wiley
Ron & Phyllis Wolschlager
Ronald & Jacqueline Wonso
Arthur & Suzanne Wyatt



ASBURY PARK TRAVELS TO TEXAS

By JENNIFER JOHNS, CURATOR

Ruthmere has a wonderful fine arts collection that attracts the attention of many museum goers and researchers. Last spring we received a request to use the image of our painting *Asbury Park*, 1906, signed “Chas. Turner,” for a book to be published by the Texas State Historical Association written by James Baker. Baker has been researching artworks signed “Chas. Turner” for the past 10 years, hypothesizing that these paintings were actually executed by a different artist. All the works done by this artist date between 1904 and 1909, and reflect subject locations of the mid-Atlantic area, mostly Staten Island, New York. Here is where Ruthmere’s painting *Asbury Park* enters into the discussion.

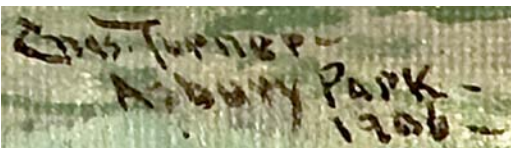
Asbury Park has always been attributed to Charles Yardley Turner (1850-1918). According to James Baker’s research, Charles Yardley Turner signed his paintings “C. Y. Turner,” instead of “Chas. Turner.” Further, the artist’s signature on these paintings in question has a distinctive left-leaning slant at the top of certain letters that is absent from authenticated Turner paintings. Lastly, Turner was known for painting human figures, with the landscape being the secondary component to his works. Most of the paintings by “Chas. Turner” are landscapes or seascapes with little or no reference to human forms. *Asbury Park* fits into this classification of “suspicious paintings” by Charles Yardley Turner.



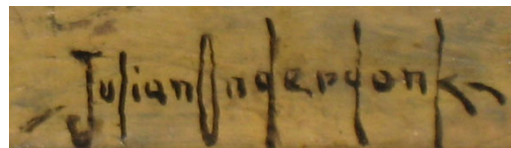
So who is this mystery artist? James Baker has identified him as the well-known Texas artist Julian Onderdonk from San Antonio, the son of another famous early Texas painter, Robert Jenkins Onderdonk. Julian did in fact live on Staten Island from 1904 to 1909, and Baker uncovered an agreement between Onderdonk and Charles E. Tunsion who acted as Julian’s agent. According to Baker, Tunsion sold paintings for Onderdonk which Julian had signed with the Turner pseudonym—this was during a time prior to Julian developing his own reputation as an artist. When examining the signatures of Onderdonk and “Chas. Turner,” Baker noted the similarities in how the letters “r” and “e” are constructed.

Along with this new scholarly research, our painting will be part of a special exhibition, **Julian Onderdonk in New York: The Lost Years, The Lost Paintings** from March 8 to September 9, 2014, at the prestigious Witte Museum in San Antonio, Texas. The Witte holds the largest collection of Onderdonk paintings in the world and display the reassembled Onderdonk studio on the museum grounds. The exhibition is based on James Baker’s book of the same name that is due to come out in March, 2014. The exhibition will be curated by Dr. Ron Tyler, former CEO and Director of Fort Worth’s Amon Carter Museum of American Art. We look forward to seeing the results of Baker’s research and this exhibit; perhaps it will shed new light on our treasured *Asbury Park*.

Chas Turner Signature



Julian Onderdonk Signature



KEY BANK COFFEE ON THE PIAZZA SPRING/SUMMER 2014

By KATE ROGERS, ASSOCIATE CURATOR

If, like me, you have cabin fever after this intense winter, Ruthmere has the cure. Our annual Saturday acoustic concert series, Key Bank Coffee on the Piazza, is almost here! Every Saturday from Memorial Day weekend to Labor Day weekend the museum will feature a different performing artist and free coffee. This year’s program is full of old favorite performers and new ones, plus a few small but exciting changes. Stay tuned for the full list of artists! New this year is local vendor, The Daily Grind, providing their fresh brewed coffee. We hope to see you there! For more information 574-264-0330 ext. 116.

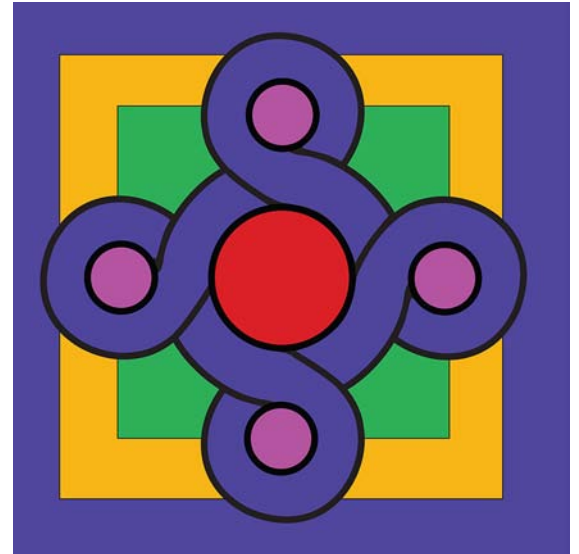


2014 RUTHMERE QUILT GARDEN “INFINITY”

By CARLA RILEY, CAMPUS COORDINATOR

As we wait for winter to take its leave, our thoughts turn to green lush lawns beneath our feet and carpets of color to delight our senses. At Ruthmere we begin to prepare our creation for the annual “Quilt Gardens on the Heritage Trail” sponsored by the Elkhart County Convention and Visitors Bureau. Selecting a pattern can be perplexing and time consuming but not for 2014. As in previous years we looked for inspiration within the walls of our historic home. The entrance to the front foyer of Ruthmere offers a recognizable archetype that is rich with symbolism, the “infinity” pattern. This pattern, with its continuous flowing paths, can be emblematic of the infinite passage of time or the constant bond built by a lifetime of friendship. Albert and Elizabeth may have chosen this pattern to offer a warm welcome to those who entered their home.

We invite you to visit Ruthmere Museum this season and experience the artistry beneath you as you step upon the infinity patterned marble tile entry made from Georgia Cherokee marble. Following your tour through Ruthmere walk to the open field just outside the wall and enjoy the delights of the infinity pattern recreated in summer colors in the 2014 Ruthmere Quilt Garden.



“Infinity” Ruthmere’s Pattern for the 2014 Quilt Garden on the Heritage Trail sponsored by the Elkhart County Convention and Visitors Bureau.

THE WHEELS ON THE BUS STOP AT RUTHMERE

By JENNIFER JOHNS, CURATOR


The Elkhart County Museum Association (ECMA) was awarded a matching grant from Elkhart County Community Foundation that will enable all 3rd - 5th graders in Elkhart County to have two free field trips, including transportation, to Elkhart County museums and cultural attractions. Ruthmere and the Havilah Beardsley House are among sites from which teachers may choose. This is another great opportunity for us to showcase our two house museums and educate the area students about the roles that the Beardsleys played in Elkhart’s history.


For the of 2013 – 2014 school year, we have scheduled close to 1,100 students to visit the Ruthmere Museums Campus. As part of their experience, students take a pre-visit survey of five questions that reveal how much they know about local history before their field trip. After their tour, they take the same survey again which measures how well the information was presented to the students and if they retained the knowledge.

In April and May of 2012-2013 Ruthmere was the site of a pilot program of this field trip incentive. It was great to see so many students who might not get the chance to come to Ruthmere and the Havilah Beardsley House be able to enjoy the experience. This year is no different. We have the opportunity to create an interest in history to Elkhart County students. The schools that came in the fall/winter were very attentive and asked great questions. It’s also nice to see returning students bring their families on Free Family Sunday.

Front of Ruthmere’s School Field Trip Bookmark, Youth Education Sponsored by Elkhart Noon Rotary Grant (back of bookmark at bottom of page 9)

RUTHMERE MUSEUM



 **BE A HISTORY DETECTIVE !**

What do the pomegranates at Ruthmere symbolize?

Who was Chief Pierre Moran?

What family name is connected to Elkhart’s early history?

What 3 waterways influenced Elkhart history?

Activity: Write a story or a poem about one of the people in the picture on the back.

Learn more at
www.Ruthmere.org or
i-Spy Tour at 574-584-7007

RUTHMERE CAMPUS RENTALS

YOUR SPECIAL DAY!



Ruthmere makes an ideal setting for elegant garden weddings from late spring through early fall. For that truly unique ceremony, Ruthmere can accommodate your needs and help assure that your wedding is beautiful and joyous. All wedding packages include the services of our Wedding Coordinator, who will work with you to ensure that your day is truly memorable.

Reservations 574-264-0330 ext. 103

CREEK HOUSE CENTER



Creek House Center provides a unique indoor and outdoor setting for your next special occasion. The facility will accommodate up to fifty people for an indoor event. Outside functions may also be planned with Creek House as the centerpiece. Creek House Center is available for overnight accommodations for up to 10 people. Book now for Notre Dame home football weekends.

Reservations 574-264-0330 ext. 113

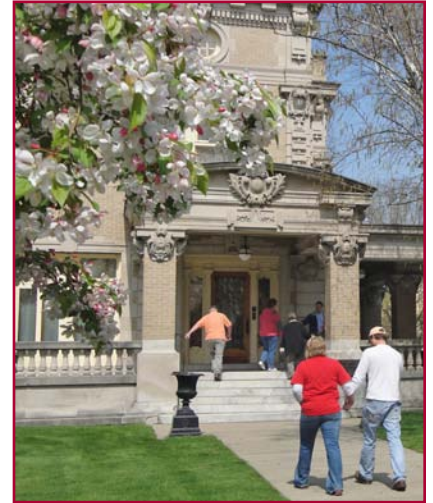
**RUTHMERE MEMBERS RECEIVE A 10% DISCOUNT ON ALL
RUTHMERE CAMPUS RENTALS**

WHAT'S HAPPENING AT RUTHMERE MUSEUM

Ruthmere Museums Campus has evolved into a place where exciting events, can and do, happen. The following is a quick description of the slate of events for the upcoming months. **Free Family Sunday** is the first Sunday of each month, April through November. Ruthmere opens its doors free of charge from 1 to 4pm; and during the months of May through October, the Havilah Beardsley House joins the Free Family Sunday program series. The Louis Comfort Tiffany members will take a **Michigan Art Tour** to Grosse Pointe, Michigan, on **May 1** (see page 10 for details).

In the tradition of Elizabeth Baldwin Beardsley, our "Flag Lady of Elkhart," on six designated **1st Source Bank Patriotic Days** of the year, visitors receive a free American flag with their tour. For the upcoming months these days include: **May 25, June 14, July 5, September 11**. The **Discover Historic Elkhart Series** is an ongoing lecture series that focuses on local history, historic preservation and cultural diversity. **May 6** will feature **Paul Yoder** of LP's **Custom Painting** who will discuss the restoration of painted surfaces both inside and outside which have taken place at the Havilah Beardsley House. On **July 1** local historian **Nelson Kraybill** will present his lecture on the Mennonites of Elkhart. **Dan Boecher**, will share information on the Downtown Elkhart Apartments on **September 2**. Admission for the Discover Historic Elkhart Series is \$10 per event (\$5 for members of Ruthmere or Indiana Landmarks) at the door, and includes light refreshments. All programs begin at 6:30pm; doors open at 6pm.

RUTHMERE AND HAVILAH BEARDSLEY HOUSE GUIDED TOURS



Guided tours of Ruthmere, the lavishly decorated 1910 historic home of Albert and Elizabeth Beardsley, are offered Tuesday through Saturday on the hour from 10am to 3pm and Sundays from 1pm to 3pm. Admission is \$10 for adults, \$4 for students and children under 5 are free with an adult.

Havilah Beardsley House, home of Elkhart's founder, is open for guided tours May through September. Tours are available Tuesdays through Sundays on the quarter-hour at 1:15, 2:15 and 3:15 pm. Regular admission is \$5 for adults, \$2 for students and children under 5 are free with an adult.

Members are admitted free at both locations (see page 2 for member benefit information).

Wednesday is Senior Discount Day. Seniors 65 and older receive admission to Ruthmere for \$7 on Wednesdays.

Bring your family and friends for an experience in history, art and architecture by way of a guided tour, a program or a special event.

For more information call:

574-264 -0330

or visit www.Ruthmere.org.

2014 SPRING/SUMMER CALENDAR OF EVENTS

April

- 1. Ruthmere Mansion Opening Day for 2014
- 6. * Free Family Sunday 1-4pm
- 20. Easter Sunday (Closed)

* Free Event

+ Member Discount Benefits

^ Bronze Patron Benefits

May

- 4. * Free Family Sunday 1-4pm
- 4. Havilah Beardsley House Opening Day for 2014
- 4. Exhibit: *Secrets of the Havilah Beardsley House* opens at Havilah Beardsley House
- 6. +^~<> Discover Historic Elkhart Series –L.P. Custom Painting, Paul Yoder 6:30pm at Havilah Beardsley House < Coporate Member Benefits
- 11. Mother's Day –Mothers free admission
- 24. * Coffee on the Piazza – Saturdays 9:30am-12pm (acoustic music starting at 10:30am)
- 25. * Blue Star Museums through August 31
- 25. Memorial Day observed* (closed Monday) – Receive free flag with each tour
- 31. * Coffee on the Piazza – Saturdays 9:30am-12pm (acoustic music starting at 10:30am)

~ Silver Patron Benefits

> Louis Comfort Tiffany Benefits

June

- 1. * Free Family Sunday 1-4pm
- 7. * Coffee on the Piazza – Saturdays 9:30am-12pm (acoustic music starting at 10:30am)
- 14. Flag Day* - Receive free flag with each tour
- 14. * Coffee on the Piazza – Saturdays 9:30am-12pm (acoustic music starting at 10:30am)
- 15. Father's Day –Fathers free admission
- 21. * Coffee on the Piazza – Saturdays 9:30am-12pm (acoustic music starting at 10:30am)
- 27. + ^~<> EOQ Cocktails – Juniper Party 5:00pm-7pm Creek House Center
- 28. * Coffee on the Piazza – Saturdays 9:30am-12pm (acoustic music starting at 10:30am)

OFF THE RECORD

DO YOU RECEIVE OUR ELECTRONIC SNAPSHOT OF MONTHLY EVENTS THAT INCLUDES PHOTOS, SHORT STORIES, LINKS AND SPECIAL OFFERS? OFF THE RECORD IS A GREAT WAY TO STAY INFORMED ABOUT RUTHMERE MUSEUMS CAMPUS HAPPENINGS - AS THEY HAPPEN! IF YOU WOULD LIKE TO SUBSCRIBE, PLEASE SEND A REQUEST TO KROGERS@RUTHMERE.ORG.

July

- 1. + ^~<> Discover Historic Elkhart Series – *Menmonites of Elkhart* Nelson Kraybill 6:30pm at Havilah Beardsley House
- 4. Closed for Independence Day
- 5. * Independence Day observed
- 5. * Coffee on the Piazza – Saturdays 9:30am-12pm (acoustic music starting at 10:30am) – Receive free flag with each tour
- 6. * Free Family Sunday 1-4pm
- 12. * Coffee on the Piazza – Saturdays 9:30am-12pm (acoustic music starting at 10:30am)
- 12. * Summer Garden Party 1-3pm
- 19. * Coffee on the Piazza – Saturdays 9:30am-12pm (acoustic music starting at 10:30am)
- 26. * Coffee on the Piazza – Saturdays 9:30am-12pm (acoustic music starting at 10:30am)

August

- 2. * Coffee on the Piazza – Saturdays 9:30am-12pm (acoustic music starting at 10:30am)
- 3. * Free Family Sunday 1-4pm & Old Fashioned Ice Cream Social 1-4pm
- 9. * Coffee on the Piazza – Saturdays 9:30am-12pm (acoustic music starting at 10:30am)
- 16. * Coffee on the Piazza – Saturdays 9:30am-12pm (acoustic music starting at 10:30am)
- 16. "The Heist: The Annual Elkhart Black Tie", hosted by Elkhart Young Professionals, Ruthmere and the Lerner
- 23. * Coffee on the Piazza – Saturdays 9:30am-12pm (acoustic music starting at 10:30am)
- 30. * Coffee on the Piazza – Saturdays 9:30am-12pm (acoustic music starting at 10:30am)

September

- 1. Closed for Labor Day
- 2. + ^~<> Discover Historic Elkhart Series –*Downtown Elkhart Apartments* Dan Boecher 6:30pm at Havilah Beardsley House
- 7. * Free Family Sunday 1-4pm
- 11. Patriot Day* - Receive free flag with each tour
- 19. R & R Series – Raclin and Ruthmere TBA
- 26. +~^<> EOQ Cocktails – Single Malt Scotch Party 5:00pm-7pm Havilah Beardsley House

INSIDE THIS ISSUE:

1. Beardsley Adventures at Highclere Castle
2. i-Spy Tours & New Member Form
3. Continued Adventures at Highclere
4. Ruthmere's Fine Arts Tour
5. End of Quarter (EOQ) Cocktails/The Heist
6. Havilah Beardsley House ECCF Grant
7. Havilah Beardsley House Sponsors
8. Havilah Beardsley House Traveling Exhibit
9. Sponsors & Business Partners
10. Louis Comfort Tiffany/Michigan Art Tour
11. Patron Membership/Live Statue at Jazz Festival
12. Asbury Park Travels To Texas
13. 2014 Quilt Garden/Ruthmere Field Trips
14. Ruthmere Campus Rentals/What's Happening
15. Calendar of Events
16. Win A Trip to Highclere Castle, The Real
Downton Abbey!

Ruthmere
An Experience in History, Art & Architecture

THE RUTHMERE FOUNDATION, INC.
302 EAST BEARDSLEY AVENUE
ELKHART, INDIANA 46514
574.264.0330
WWW.RUTHMERE.ORG

Non-Profit Organization
U.S. POSTAGE
PAID
Elkhart, IN
Permit No. 145

RUTHMERE IS SUPPORTED BY ITS MEMBERSHIP, PRIVATE DONATIONS, PLANNED GIFTS AND LEGACIES.

WIN A TRIP TO HIGHCLERE CASTLE, THE REAL *DOWNTON ABBEY!*

After watching another exciting season of the PBS hit series *Downton Abbey* and reading about Robert Beardsley's personal account of his visit to Highclere Castle, who could resist the opportunity to visit this historic landmark? Ruthmere has teamed with Menno Travel to make this dream trip come true for one lucky Ruthmere member and a guest.

On December 31, 2014, we will draw one Ruthmere member's name as the winner of a 5-day, 4-night trip to London, England, valued at \$5,000. One day of the trip will be set aside to tour Highclere Castle, the real-life site of the *Downton Abbey* TV series. Hotel accommodations will be at the 4-star Doubletree by Hilton-Westminster.

Transportation includes round-trip airfare from Chicago O'Hare to London Heathrow as well as round-trip train tickets to Highclere Castle. Menno Travel will work with the drawing winner to customize the tour trip.

All Ruthmere members at the Individual (\$50) and Family (\$75) membership levels, as well as current Ruthmere members who renew in 2014 at their existing level, will receive one chance to win. Renewing members who increase their level of membership in 2014 will triple their odds with three chances to win. Likewise, new members who join at the Patron (\$100) level or higher will be given three chances to win. For more information 574-264-0330 or www.Ruthmere.org.

Ruthmere staff, Board members, Menno Travel employees and their immediate relatives are excluded from participation in the drawing. Minimum of 350 entries required to conduct drawing.

Ruthmere
An Experience in History, Art & Architecture

MENNO
TRAVEL
People With The Right Connections